

“Turning data into
decisions”

CONTACT US

If there is anything you need to ask
then you can contact us at



Delhi, IN



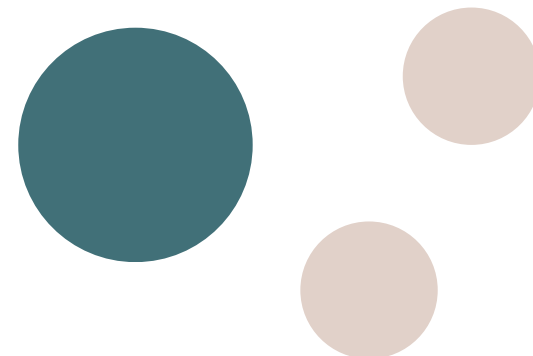
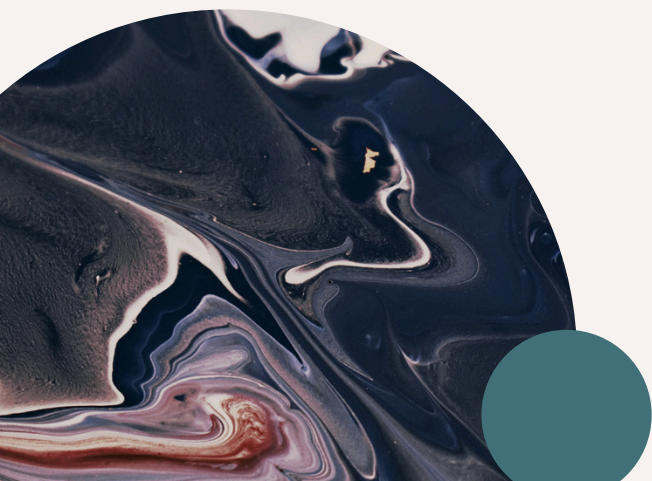
kapable.solutions@gmail.com



ABOUT US

We are a state-of-the-art scientific testing and consultancy firm delivering accurate, reliable, and data-driven insights. We have tie-ups with different labs from all over the world for advanced testing. Our experts support industries, research institutions, and product development teams through advanced testing and analytical consultancy.

KAPABLE
SOLUTIONS PVT. LTD.



WHAT MAKES US DIFFERENT ?

OUR AREAS OF EXPERTISE

POLYMERS / PLASTICS

TEXTILES (FIBRE SCIENCE
& TECHNOLOGY)

NANOTECHNOLOGY
(Nano-finishing, synthesis
of nanomaterials)

PLASMA TECHNOLOGY

REVERSE ENGINEERING

CLEAR, WELL-INTERPRETED REPORTS

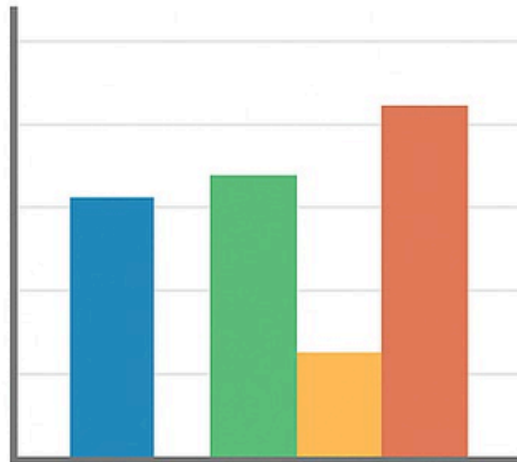
DETAILED DATA
INTERPRETATION

DATA TO DECISION

FAST & DEPENDABLE RESULTS

SMOOTH & FAST PROCESS

ZERO COMPROMISE ON QUALITY



INDUSTRIES WE SUPPORT

- POLYMERS & PLASTICS
- TEXTILES & FIBRES
- AUTOMOTIVE & AEROSPACE
- PHARMACEUTICALS
- CONSUMER PRODUCTS
- ENVIRONMENT & WASTE MANAGEMENT
- TOY INDUSTRY
- ACADEMIC & RESEARCH LABS



CORE TESTING CAPABILITIES

- MATERIAL & CHEMICAL ANALYSIS
- POLYMER AND TEXTILE CHARACTERIZATION
- NANOMATERIALS

CONSULTANCY

- DETAILED DATA INTERPRETATION
- ROOT CAUSE & FAILURE ANALYSIS
- PROCESS OPTIMIZATION
- GUIDANCE FOR SCALE UP

ADVANCED INSTRUMENTS

- THERMAL SERIES DSC, TGA, TMA
 - SPECTROSCOPY FTIR, RAMAN, UV-VIS, XRD, XPS
 - MORPHOLOGICAL ANALYSIS SEM, FE-SEM, TEM, HR-TEM, OPTICAL MICROSCOPE
- NMR
- ROTATIONAL RHEOMETER
- STATIC UTM
- CONTACT ANGLE
- DLS
- MOISTURE ANALYZER
- MELT FLOW INDEX (MFI)

WORK FLOW

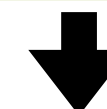
REQUIREMENT DISCUSSION



SAMPLE TESTING & ANALYSIS



DATA INTERPRETATION



CONSULTANCY & RECOMMENDATIONS



FINAL REPORT DELIVERY